

Straight Line graphs

worksheet

20 min
24 marks

1. The diagram below shows the line PQ, whose equation is $x + 2y = 12$. The line intercepts the axes at P and Q respectively.

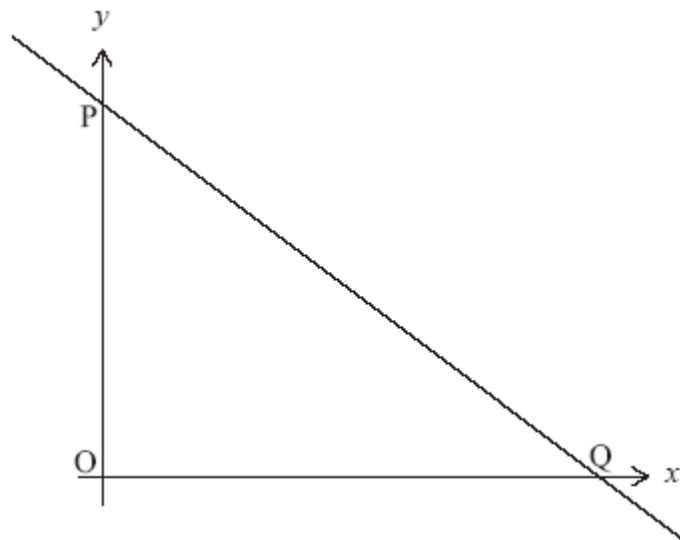


diagram not to scale

- (a) Find the coordinates of P and of Q.

(3)

- (b) A second line with equation $x - y = 3$ intersects the line PQ at the point A. Find the coordinates of A.

(3)

(Total 6 marks)

2. The straight line L passes through the points $A(-1, 4)$ and $B(5, 8)$.

- (a) Calculate the gradient of L .

(2)

- (b) Find the equation of L .

(2)

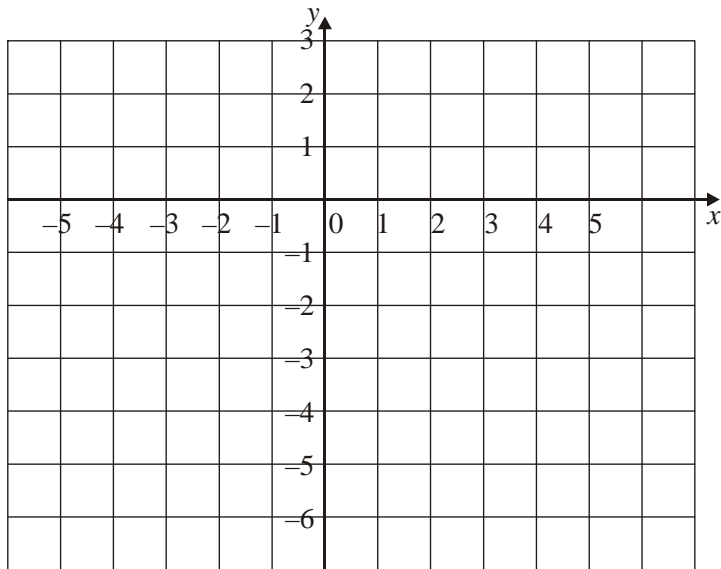
The line L also passes through the point $P(8, y)$.

- (c) Find the value of y .

(2)

(Total 6 marks)

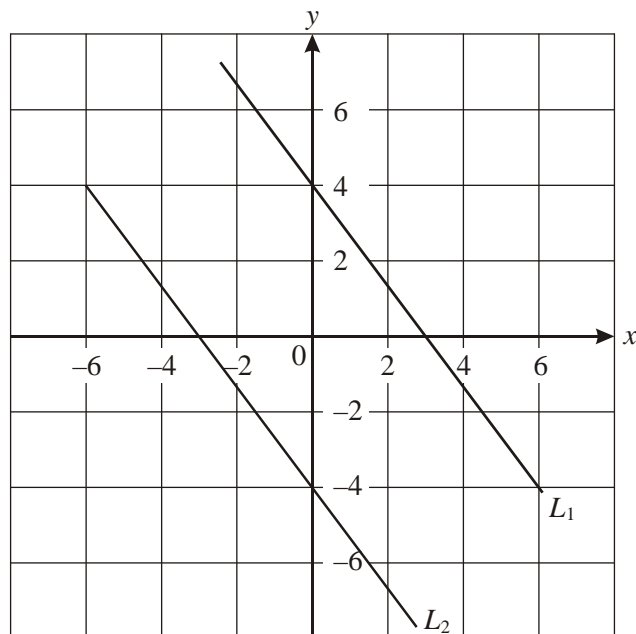
3.



- (a) On the grid above, draw a straight line with a gradient of -3 that passes through the point $(-2, 0)$.
- (b) Find the equation of this line.

(Total 8 marks)

4. In the diagram, the lines L_1 and L_2 are parallel.



- (a) What is the gradient of L_1 ?
- (b) Write down the equation of L_1 .
- (c) Write down the equation of L_2 in the form $ax + by + c = 0$.

(Total 4 marks)