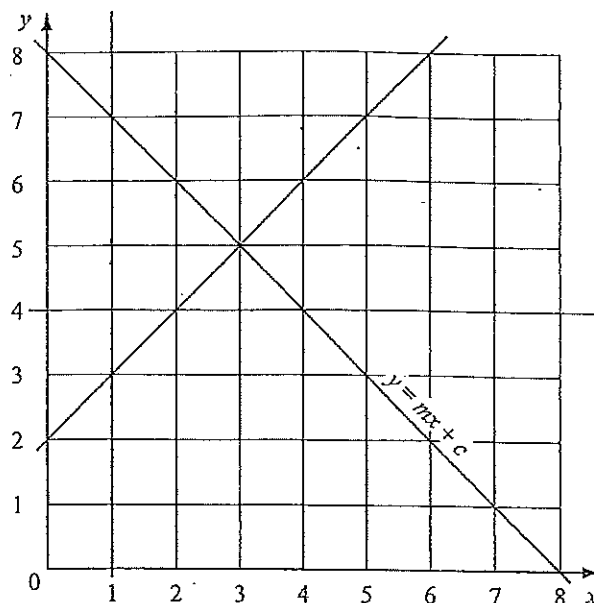


# IGCSE - Inequalities -P2 - 2

May 06 Paper 2

20



- (a) One of the lines in the diagram is labelled  $y = mx + c$ .  
Find the values of  $m$  and  $c$ .

Answer(a)  $m = \dots\dots\dots$  [1]

$c = \dots\dots\dots$  [1]

- (b) Show, by shading all the unwanted regions on the diagram, the region defined by the inequalities

$$x \geq 1, \quad y \leq mx + c, \quad y \geq x + 2 \quad \text{and} \quad y \geq 4.$$

Write the letter R in the region required. [2]

May 03 Paper 2

- 19 A ferry has a deck area of  $3600 \text{ m}^2$  for parking cars and trucks.  
Each car takes up  $20 \text{ m}^2$  of deck area and each truck takes up  $80 \text{ m}^2$ .  
On one trip, the ferry carries  $x$  cars and  $y$  trucks.

- (a) Show that this information leads to the inequality  $x + 4y \leq 180$ .

[2]

- (b) The charge for the trip is \$25 for a car and \$50 for a truck.  
The total amount of money taken is \$3000.  
Write down an equation to represent this information and simplify it.

Answer (b)  $\dots\dots\dots$  [2]