

IBSL Functions Past Paper Questions

1. Let $f(x) = \sqrt{x+4}$, $x \geq -4$ and $g(x) = x^2$, $x \in \mathbb{R}$.

(a) Find $(g \circ f)(3)$.

(b) Find $f^{-1}(x)$.

(c) Write down the domain of f^{-1} .

.....

.....

.....

.....

.....

.....

.....

.....

.....

(Total 6 marks)

2. Two functions f, g are defined as follows:

$$f: x \rightarrow 3x + 5$$

$$g: x \rightarrow 2(1 - x)$$

Find

(a) $f^{-1}(2)$;

(b) $(g \circ f)(-4)$.

Working:

Answers:

(a)

(b)

(Total 4 marks)

3. Consider the functions $f(x) = 2x$ and $g(x) = \frac{1}{x-3}$, $x \neq 3$.

- (a) Calculate $(f \circ g)(4)$.
- (b) Find $g^{-1}(x)$.
- (c) Write down the domain of g^{-1} .

Working:

Answers:

- (a)
- (b)
- (c)

(Total 6 marks)

4. The equation $x^2 - 2kx + 1 = 0$ has two distinct real roots. Find the set of all possible values of k .

Working:

Answer:

.....

(Total 6 marks)

5. Consider two different quadratic functions of the form $f(x) = 4x^2 - qx + 25$. The graph of each function has its vertex on the x -axis.

- (a) Find both values of q .
- (b) For the greater value of q , solve $f(x) = 0$.
- (c) Find the coordinates of the point of intersection of the two graphs.

.....

.....

.....

.....

.....

.....

.....

.....

.....

.....

(Total 6 marks)

6. The equation $kx^2 + 3x + 1 = 0$ has exactly one solution. Find the value of k .

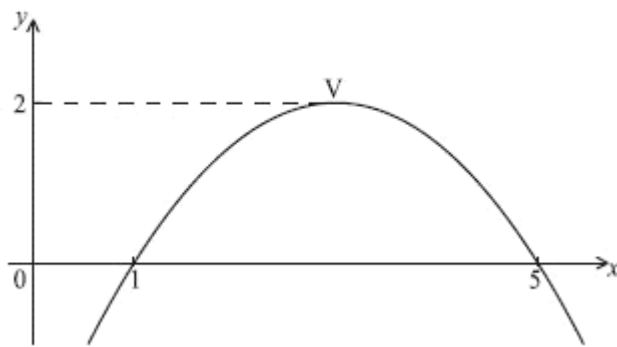
Working:

Answer:

.....

(Total 6 marks)

7. Part of the graph of the function $y = d(x - m)^2 + p$ is given in the diagram below. The x -intercepts are $(1, 0)$ and $(5, 0)$. The vertex is $V(m, 2)$.



(a) Write down the value of

(i) m ;

(ii) p .

(b) Find d .

.....

.....

.....

.....

.....

.....

.....

.....

.....

.....

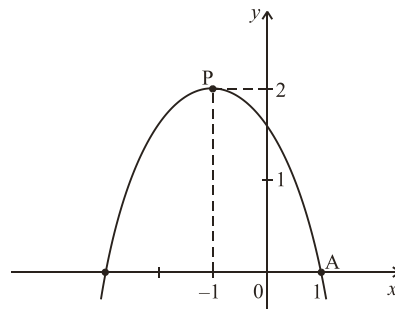
.....

.....

.....

(Total 6 marks)

8. The diagram shows part of the graph of $y = a(x - h)^2 + k$. The graph has its vertex at P, and passes through the point A with coordinates (1, 0).



- (a) Write down the value of
 (i) h ;
 (ii) k .
 (b) Calculate the value of a .

Working:

Answers:

- (a) (i)
 (ii)
 (b)

(Total 6 marks)

9. The function f is given by $f(x) = x^2 - 6x + 13$, for $x \geq 3$.
 (a) Write $f(x)$ in the form $(x - a)^2 + b$.
 (b) Find the inverse function f^{-1} .
 (c) State the domain of f^{-1} .

Working:

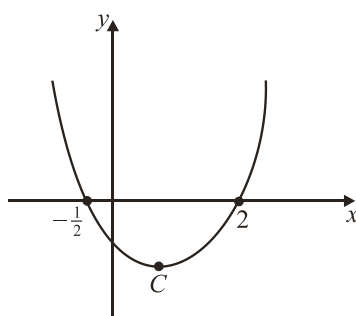
Answers:

- (a)
 (b)
 (c)

(Total 6 marks)

10. The diagram represents the graph of the function

$$f: x \mapsto (x - p)(x - q).$$



- (a) Write down the values of p and q .
 (b) The function has a minimum value at the point C . Find the x -coordinate of C .

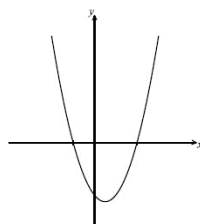
Working:

Answers:

- (a)
 (b)

(Total 4 marks)

11. The following diagram shows part of the graph of f , where $f(x) = x^2 - x - 2$.



- (a) Find both x -intercepts.
(4)
 (b) Find the x -coordinate of the vertex.

.....

.....

.....

.....

.....

.....

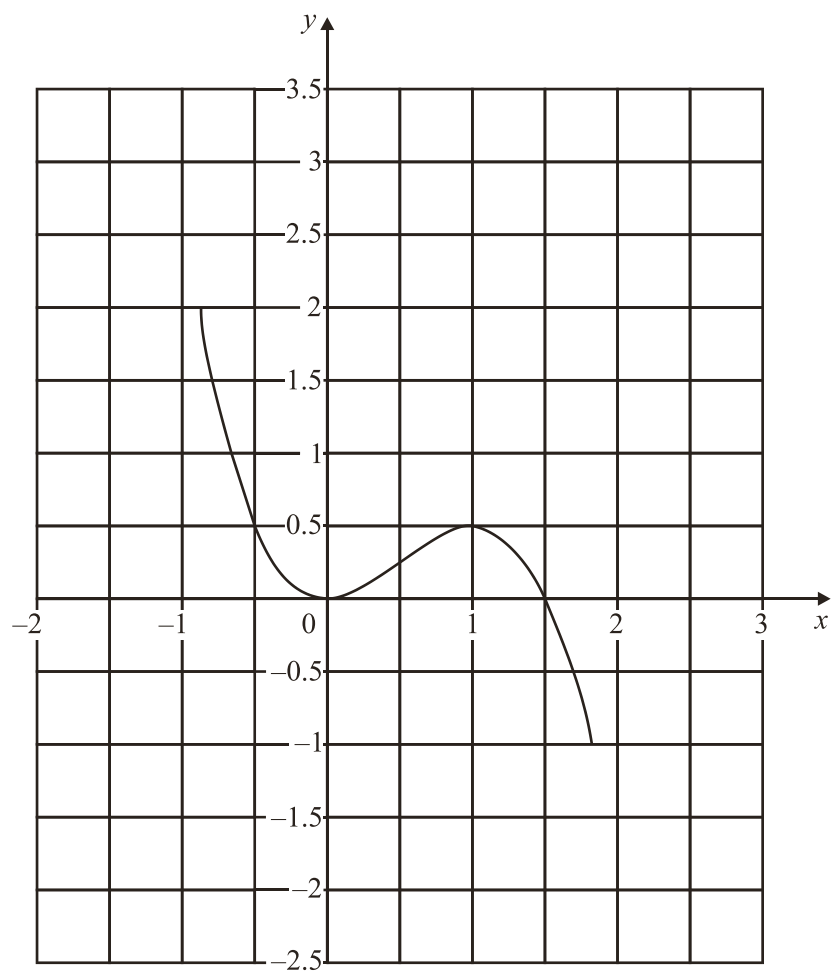
.....

.....

(2)

(Total 6 marks)

12. The following diagram shows the graph of $y = f(x)$. It has minimum and maximum points at $(0, 0)$ and $(1, \frac{1}{2})$.



- (a) On the same diagram, draw the graph of $y = f(x-1) + \frac{3}{2}$.
- (b) What are the coordinates of the minimum and maximum points of $y = f(x-1) + \frac{3}{2}$?

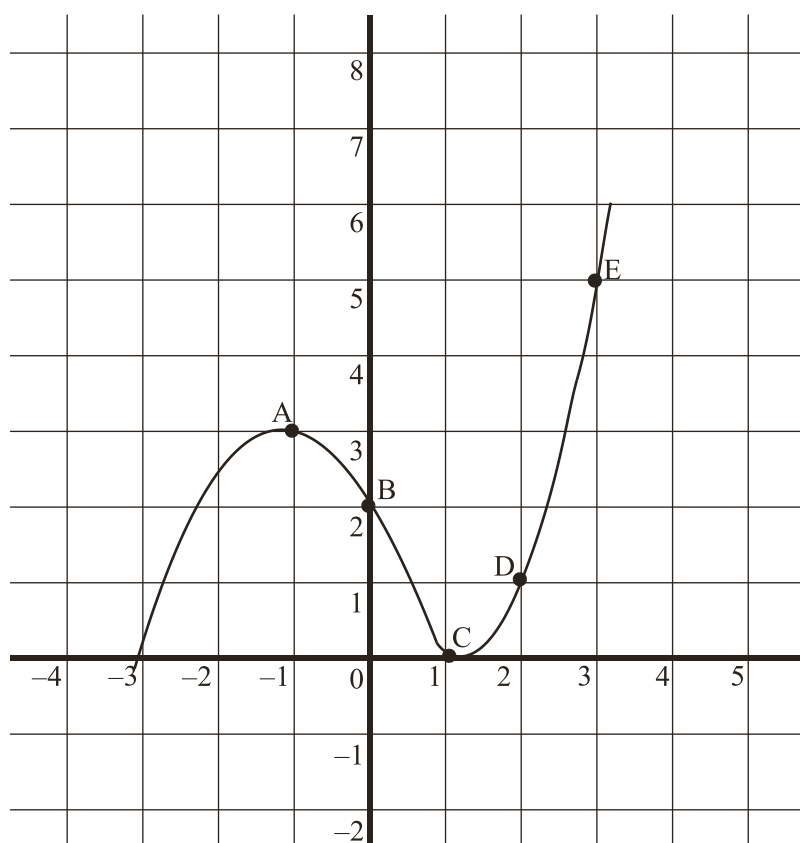
Working:

Answer:

(b)

(Total 4 marks)

13. The sketch shows part of the graph of $y = f(x)$ which passes through the points A(-1, 3), B(0, 2), C(1, 0), D(2, 1) and E(3, 5).



A second function is defined by $g(x) = 2f(x - 1)$.

- (a) Calculate $g(0)$, $g(1)$, $g(2)$ and $g(3)$.
- (b) On the same axes, sketch the graph of the function $g(x)$.

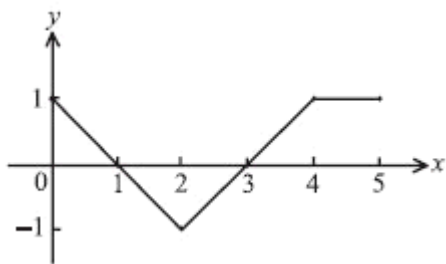
Working:

Answers:

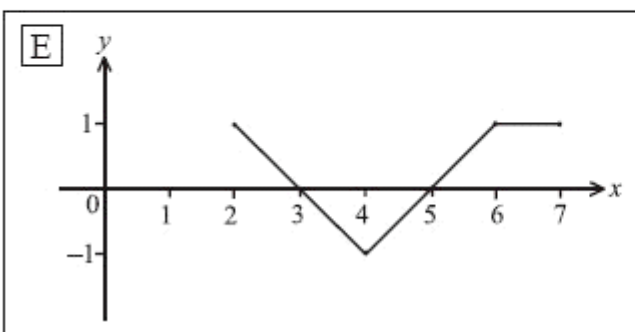
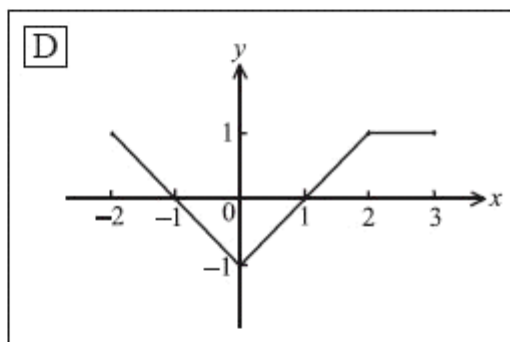
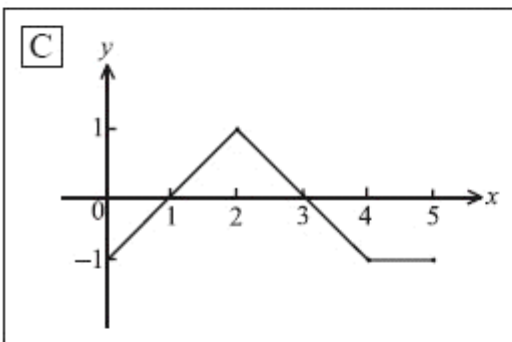
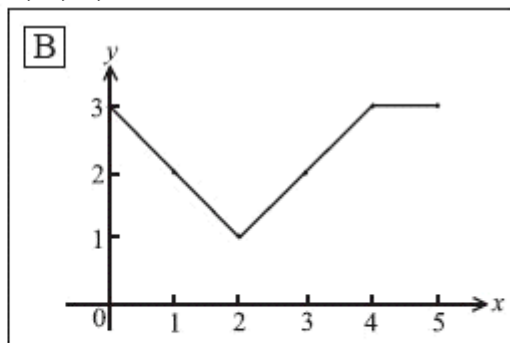
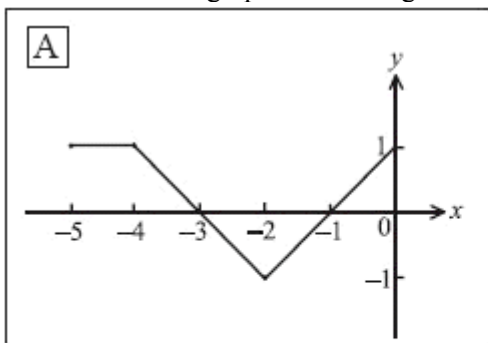
- (a)
-

(Total 6 marks)

14. The following diagram shows part of the graph of $f(x)$.



Consider the five graphs in the diagrams labelled A, B, C, D, E below.



- (a) Which diagram is the graph of $f(x + 2)$?
- (b) Which diagram is the graph of $-f(x)$?
- (c) Which diagram is the graph of $f(-x)$?

.....

.....

.....

(Total 6 marks)

15*. Let $f(x) = 3x - e^{x-2} - 4$, for $-1 \leq x \leq 5$.

(a) Find the x -intercepts of the graph of f .

.....

.....

.....

.....

.....

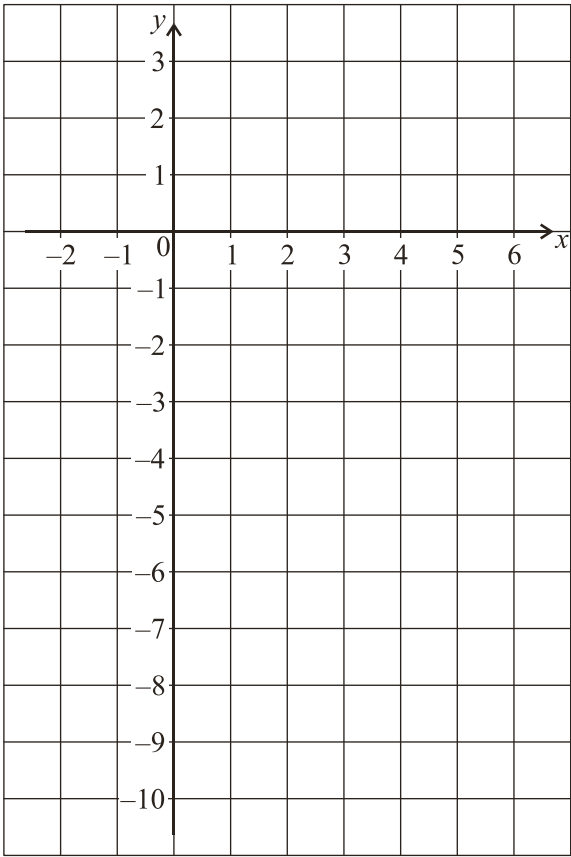
.....

.....

.....

(3)

(b) On the grid below, sketch the graph of f .



(3)

(Total 6 marks)

16. The quadratic function f is defined by $f(x) = 3x^2 - 12x + 11$.
- (a) Write f in the form $f(x) = 3(x - h)^2 - k$.
- (b) The graph of f is translated 3 units in the positive x -direction and 5 units in the positive y -direction. Find the function g for the translated graph, giving your answer in the form $g(x) = 3(x - p)^2 + q$.

.....

.....

.....

.....

.....

.....

.....

.....

.....

(Total 6 marks)

17. (a) Express $y = 2x^2 - 12x + 23$ in the form $y = 2(x - c)^2 + d$.
- The graph of $y = x^2$ is transformed into the graph of $y = 2x^2 - 12x + 23$ by the transformations
- a vertical stretch with scale factor k **followed by**
a horizontal translation of p units **followed by**
a vertical translation of q units.

- (b) Write down the value of
- (i) k ;
- (ii) p ;
- (iii) q .

.....

.....

.....

.....

.....

.....

.....

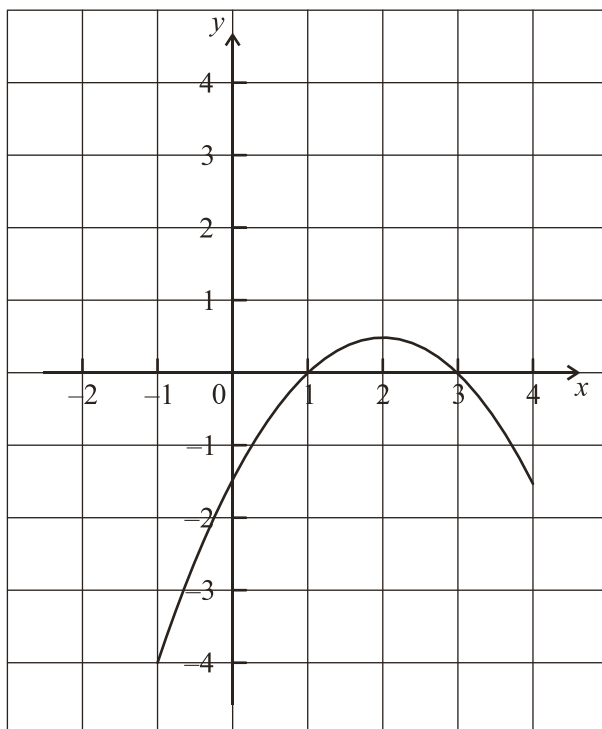
.....

.....

.....

(Total 6 marks)

18. Part of the graph of a function f is shown in the diagram below.



- (a) On the same diagram sketch the graph of $y = -f(x)$.

(2)

- (b) Let $g(x) = f(x + 3)$.

- (i) Find $g(-3)$.

- (ii) Describe **fully** the transformation that maps the graph of f to the graph of g .

.....

.....

.....

.....

.....

.....

.....

.....

.....

(4)

(Total 6 marks)